



# ***Next Generation Standard for Intermittent Hot Foil Coder***

Intermittent hot foil coder series are remodeled. By reviewing the conventional machine from the basic design, high quality and high performance have been realized.

## **All-in-one Body**

All-in-one body with control unit and operation panel mounted in the main body. It is lightweight, and compact design suitable for mounting on packaging machines.

## **Digital Parameter Control**

Various parameters such as tape feeding amount, printing time, type temperature are digitally controlled. Equipment operational stability, reproducibility at change of setting have been realized.

## **Digital Temperature Control**

The time to reach the printable temperature at the time of turning at power on and the time of type replacement is greatly shortened. Contributing to downtime reduction.

## **Segmented Device State Management**

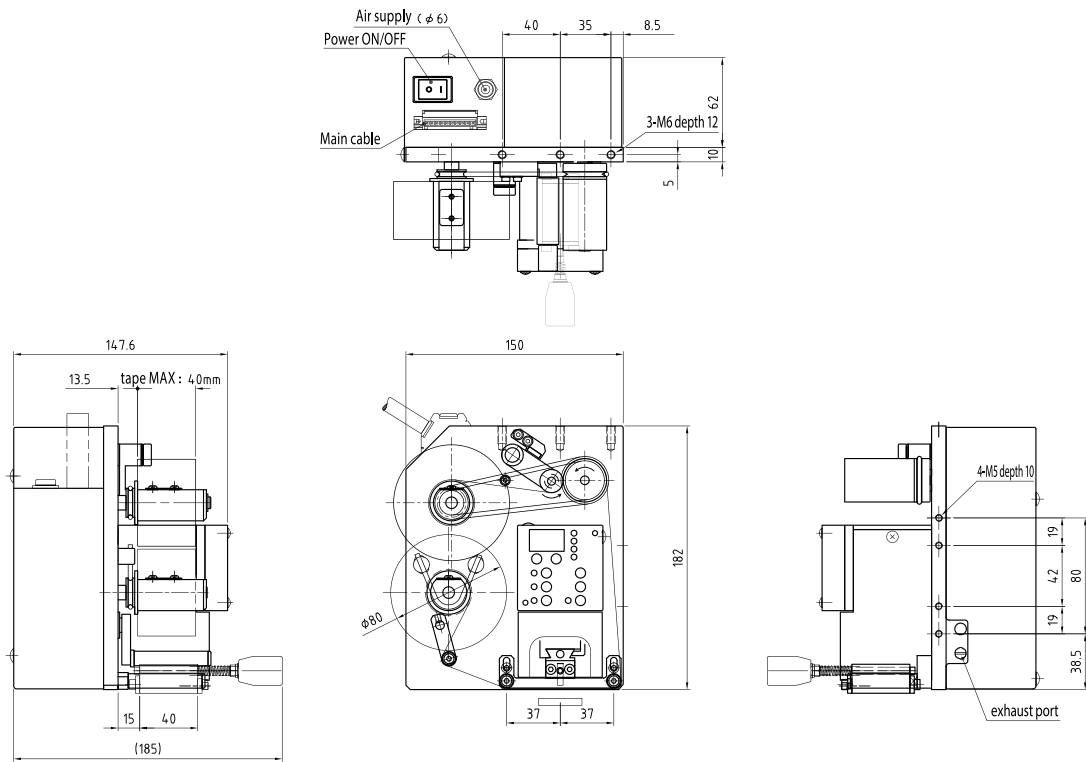
When a device error occurs, a detailed error code is displayed on the operation panel. Because it is easier to investigate the cause of the error, it is easier to recover the equipment.

# SPECIFICATION

Model	HP2200	Maximum Number of Type Lane	4 lanes
Type	Intermittent	Maximum Print Range (Width)	22mm (at print across web flow direction)
Drive Method	Air Cylinder and stepping motor	Temperature Adjustment Range	50°C-200°C
Maximum Print Speed	250 shots/min (at foil advance of 12mm and printing time of 50ms)	Printing Time	10ms-990ms
		Power Supply	DC24V · 120VA
Foil Advance	3mm-30mm	Air Pressure	0.3MPa-0.6MPa (clean air)
Foil Width	15mm-40mm	Air Consumption Amount	12L/min (ANR)
Foil Length	100m / 150m	Alarm	24 types
Operating Environment	Temperature : 5°C-40°C Humidity : Under 90%RH (no dew condensation)		

The specification may differ from conditions of use. Specification and other information are subject to change without notice.

## ■ Outline Dimensional Drawing



## ■ Options

